

# 2021-2022 Annual Report

April 1, 2021 - March 31, 2022

## CLIENT VISITS

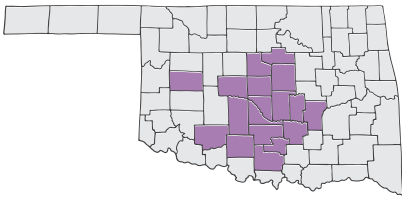
**6,249**  
BABYMOBILE VISITS

TOTAL NUMBER  
OF VISITS  
**17,922**

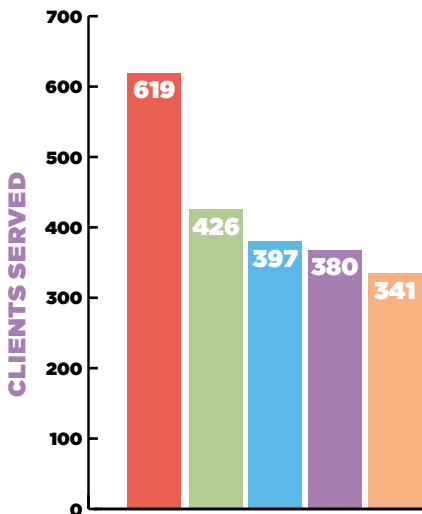
**26%**  
NEW CLIENTS

### BABYMOBILE

The BabyMobiles made **216 stops** at **49 different locations** in **18 counties**

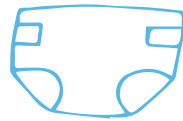


### BABYMOBILE LOCATIONS MOST VISITED

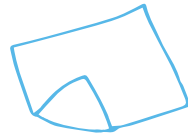


- Lawton Coliseum
- Variety Care Lafayette (OKC)
- Our Daily Bread (Stillwater)
- NSO WIC (OKC)
- Seminole State College

### SERVICES PROVIDED



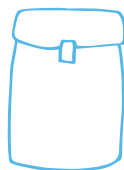
**777,649**  
Diapers



**14,949**  
Packs of wipes



**177,884**  
Formula bottles

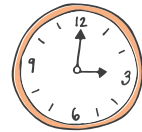


**10,039**  
Toddler food packs



**18,370**  
Pounds of clothing

### VOLUNTEERS



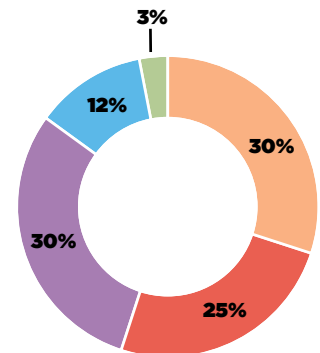
**2,165**  
volunteers gave

**7,023**

hours of their time to  
Infant Crisis Services

### DONATION BREAKDOWN

Where do our donations come from?



- Individuals
- Events
- Grants
- Corporations
- Churches/groups/schools

Infant Crisis Services

# Statement of Activities

for the year ending March 31, 2022

	for the year ending March 31, 2022	for the year ending March 31, 2021
<b>Revenues and Support</b>		
Contributions	\$2,015,614	\$2,091,868
Grants and sponsorships	705,813	474,350
Investment income, net	108,372	724,965
Special event revenues	850,467	604,617
Other income	139	
<b>Total Revenue and Support</b>	<b>3,680,405</b>	<b>3,895,800</b>
<b>Expenses</b>		
Program services	\$2,568,540	\$2,560,055
Management and general	139,492	130,263
Cost of direct benefit to donors	187,158	18,785
Fundraising	332,412	309,496
<b>Total Expenses</b>	<b>3,227,602</b>	<b>3,018,599</b>
Change in Net Assets	452,803	877,201
<b>Net Assets, beginning of year</b>	<b>11,761,977</b>	<b>10,884,776</b>
<b>Net Assets, end of year</b>	<b>12,214,780</b>	<b>11,761,977</b>

Infant Crisis Services provides life-sustaining food, formula and diapers to babies and toddlers in times of crisis...because no baby should go hungry.

4224 N Lincoln Blvd  
Oklahoma City, OK 73105  
(405) 528-3663  
www.infantcrisis.org



2022-2023

## BOARD OF DIRECTORS

### CHAIR

Kyle Impson

### VICE CHAIR

Joy LaBar

### TREASURER

Jeff Bonney

### SECRETARY

Melanie Marshall, M.D.

## BOARD GOVERNANCE CHAIR

Andi Bledsoe

### MEMBERS

Cindy Batt

Cher Bumps

Katherine Buxton

Carol Clark

Dr. Sharri L. Coleman

David Cottrell

Tiffany Eitzmann

John Laws

Callie Merritt

Lauren Ottaway Johnson

Lisa Putt

Cherish Ralls

Marisa Records

Muhammet Ali Sezer

Clay Taylor

Brooke Townsend

Annette White-Klososky

Afiya Wilkins

### PEDIATRIC CONSULTANT

Marny Dunlap, M.D.

### STAFF

#### Executive Director

Miki Farris

#### Director of Operations and Finance

Jennifer Boren

#### Director of Volunteer Programs

Beth Lykins

#### Director of Development and Communications

Allison Parker